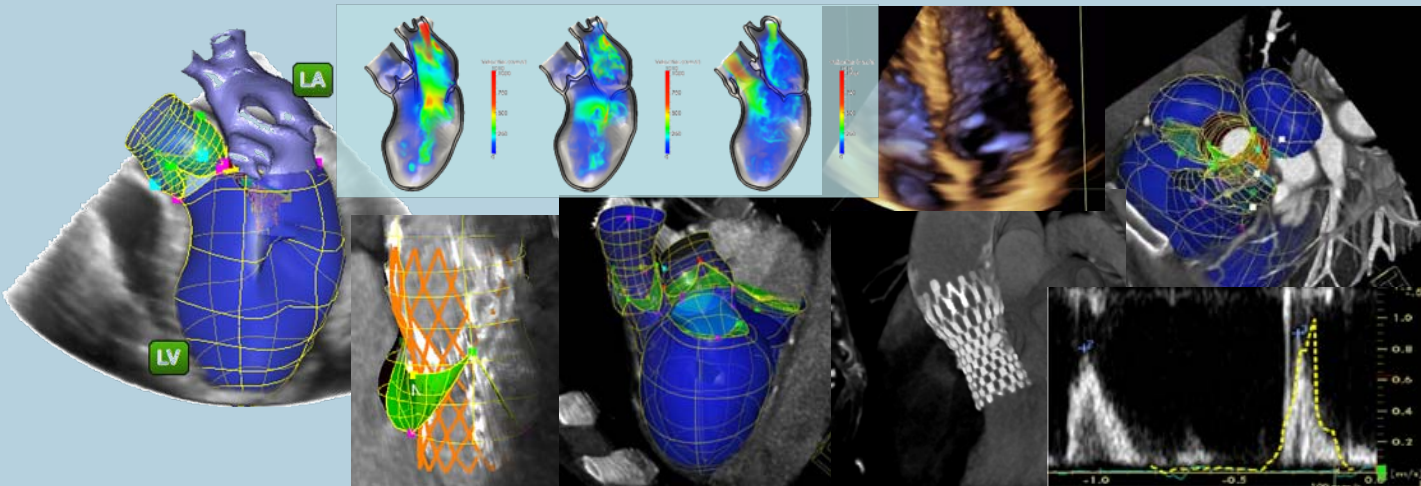


> Looking for an Internship or Thesis in Computer Vision, Machine Learning or Medical Image Processing?



Siemens Corporate Research & Technologies (SCR) is one of the world's premier research labs for computer vision, medical imaging, and applied machine learning. SCR provides a stimulating environment for highly talented and self-motivated researchers. SCR excels in transferring academic research into innovative products, and works in close collaboration with clinical partners. The lab has more than 250 researchers and over 200 students involved in hundreds of University, Clinical and Government collaborations. SCR is part of Siemens Corporate Technology, a division comprising 2500+ scientists in Erlangen, Princeton, Berkeley, Munich, Berlin, Tokyo, Beijing, Shanghai, Bangalore, and Moscow.

SCR has several openings for full-time and part-time internships as well as master theses for its sites in **Erlangen, Germany** and **Princeton, NJ, USA** in the areas of Medical Image Processing, Robust Computer Vision, Machine Learning and Pattern Recognition. Our focus is to exploit large collections of data to build robust vision, imaging and modeling applications.

You will have the opportunity to test your knowledge in machine learning and computer graphics in a challenging problem-solving environment. You will be encouraged to think out of the box, innovate, and learn to find solutions to real-life problems.

Candidates should have profound programming skills in C/C++ and a basic knowledge of medical imaging, machine learning / pattern recognition and statistics. Candidates with additional practical knowledge on frameworks such as ITK, VTK, OpenCV or Cuda are preferred.

Please send your CV to: ingmar.voigt@siemens.com

Make sure to include:

- > cover letter (1 page)
- > work experience and research projects
- > transcripts (with or without grades)
- > references (if available)

Image Analytics and Informatics GTF

San Carlos Str. 7 • 91058 Erlangen, Germany
755 College Road East • Princeton, NJ 08540, USA

<http://www.siemens.com/corporate-technology/en/research-areas/information-and-automation-technologies.htm>

SIEMENS
corporate research
& technology